

Work Area Solutions

LC Adapter Specification



Appearance & Dimension:

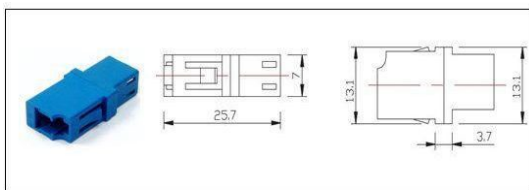


Figure1. LC RJ45 Simplex Adaptor Appearance & Dimension

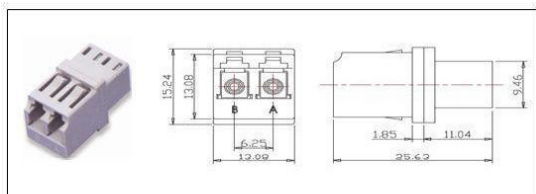


Figure2. LC RJ45 Duplex Adaptor Appearance & Dimension

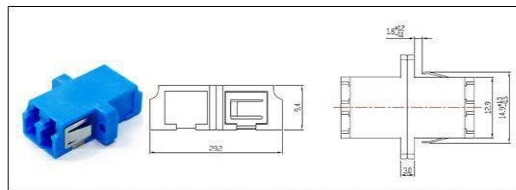


Figure3. LC SC Footprint Duplex Adaptor Appearance & Dimension

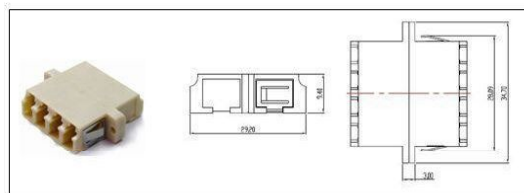


Figure4. LC SC Footprint Quad Adaptor Appearance & Dimension

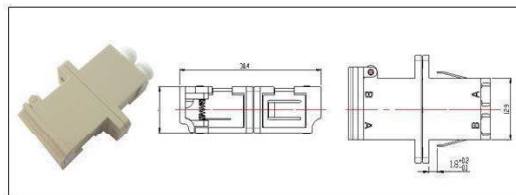


Figure5. LC Duplex Adaptor without Flange

Applications:

- Telecommunication
- CATV
- LAN & WAN
- Network
- Broadband
- FTTH

Feature :

- Single mode and Multimode
- Zirconia sleeves or Phosphor bronze sleeves
- NTT standard compatible
- Available without flanges or with flange for duplex, saving panel space
- LC 8 Port high density for patch panel mount applications
- Meet JIS5974 and bellcore GR-326 standard
- Compliant with IEC874-14 % IEC874-19
- All parts compliant with ROHS

Parameter:

Product	LC Adaptor	
Mode	S.M(Zroz)	M.M(P.B)
Insertion Loss	≤0.2dB	≤0.3dB
Mating Durability(500 timer)	Additional Loss≤0.1dB,Return Loss Variability<5dB	
Temperature Stability(-40℃~85℃)	Additional Loss≤0.2dB,Return Loss Variability<5dB	
Operating Temperature	-40℃~+85℃	
Storage Temperature	-40℃~+85℃	